

Human Journals

**Review Article**

February 2022 Vol.:20, Issue:4

© All rights are reserved by Raimundo Mainar de Medeiros et al.

## Amparo De São Francisco Municipality, Sergipe State, Brazil Applying the Gamma Probability Model For



**IJSRM**  
INTERNATIONAL JOURNAL OF SCIENCE AND RESEARCH METHODOLOGY  
An Official Publication of Human Journals



**Manoel Viera de França<sup>1</sup>, Raimundo Mainar de Medeiros\*<sup>1</sup>, Luciano Marcelo Fallé Saboya<sup>2</sup>, Romildo Morant de Holanda<sup>1</sup>, Francisco de Assis Salviano de Sousa<sup>2</sup>, Fernando Cartaxo Rolin Neto<sup>1</sup>**

*1 Universidade Federal Rural de Pernambuco, Brasil*  
*2 Universidade Federal de Campina Grande, Brasil*

**Submitted:** 25 January 2022  
**Accepted:** 30 January 2022  
**Published:** 28 February 2022

**Keywords:** Rainfall Indices, Probability Models, Climatology.

### ABSTRACT

Effective rainfall resolution gives great importance to studies of precipitation, which aim to be applied in agriculture since this portion of precipitation is the one that contributes to the available water in the soil. The objective of the present work is to estimate the monthly probable rainfall at different levels of occurrence probability applying the Gamma probability distribution model for Amparo de São Francisco – Sergipe state, Brazil. The Gamma probabilistic model and the adherence of monthly precipitation data to the distribution model were evaluated by the Kolmogorov-Smirnov test. The used adjustments of the Gamma probability distributions were influenced by the climatic and geographic characteristics of the studied area. The Gama probabilistic model was adapted to the monthly rainfall data of the studied area. For the 75% probability level, the annual totals of the most significant effective precipitation were registered in March to August, with oscillations from 111.0 mm to 251.6 mm. For 95% of precipitation probability, the only month that has rainfall rates below 100 mm in November. In the Ks test at 5%, every month registered low levels of significance.



HUMAN JOURNALS

[www.ijsrm.humanjournals.com](http://www.ijsrm.humanjournals.com)

## INTRODUCTION

The absence of up-to-date studies and climate knowledge, followed by their analyzes and the characteristics of rainfall distribution and techniques, based on probabilistic criteria, which generally involve risks, has led technicians and scientists to use an irrigation system based on certain probabilities. Sanchez (1972) and Louzada *et al.* (1991) stated that this methodology has some limitations such as variation in rainfall distribution and soil moisture at the time of precipitation.

Saboya *et al.*, (2021) Studies on rainfall distribution favor the planning of the amount of water necessary for the development of human activities, whether personal, industrial, or agricultural. The objective of this work is to statistically model the monthly mean precipitation values and estimate the respective precipitation at different levels of probability, through the Gamma distribution, for the Municipality of Barbalha – Ceará, Brazil, in the period from 1973 to 2017. The Gamma Probabilistic Function Model and the adherence test monthly data were evaluated by the Kolmogorov-Smirnov test. Means range from 3.6 mm (August) to 237.4 mm (March). The four months with the highest rainfall are registered between January and April, and the one with the lowest indices occurs between June and September. The oscillation of the alpha parameter occurred from 0.829 (August/September) to 0.896 (March); the beta parameter oscillated between 0.851 (August/September) to 0.922 (March). Regarding the empirical probability for occurrences of total annual rainfall, the percentage stands out 50% and 70% with rain possibilities higher than the historical average. Positive anomaly oscillations flowed between 75 mm to 910 mm. Negative anomalies ranged from 55.5 mm in 2005 to 432 mm in 1982.

The best methodology information for adjusting probability models is an indispensable link for reducing human vulnerability in the occurrence of natural disasters. Estimating the probability of extreme events that are potentially harmful to society, such as the annual maximum daily rainfall variability, is a strong motivation for the study and statistical modeling of these events. Since the occurrence of these precipitations is a random process (HARTMANN *et al.*, 2011), not allowing a deterministic forecast in advance, the adjustment of a probabilistic model that best describes the process is necessary to make estimates of extreme events.

The estimation of parameters from the observed data can be done numerically, with the method of moments and the maximum likelihood being indicated. The estimation of parameters by the maximum likelihood method is accepted as being more efficient, although numerically difficult compared to the method of moments. For small samples, this method generally leads to poorer estimates, being less variable than the method of moments (KITE, 1978; SEVRUK et al., 1981; CLARKE, 1994).

The Gamma distribution proposed by Thom (1958) is a probabilistic method for estimating probable rainfall under different conditions of occurrence probability. Is commonly used in works with this proposal, adjusting to the total rainfall of monthly or shorter periods, as can be observed in the works by Lima *et al.*, (2008); Silva *et al.*, (2007); Passos *et al.*, (2017), and Passos *et al.*, (2018), among others.

According to Naghettini *et al.*, (2007), the parameters of probability distributions must be estimated by some procedure of mathematical statistics. According to some authors, there is a range of methods for estimating parameters, among which the method of moments, the maximum likelihood, and the L-moments stand out. Thus, a problem that arises in practice is the choice of the best adjustment method and the distribution of the most appropriate extreme values for a given sample of data.

Several studies carried out through the Gamma probability distribution, to estimate the probably expected rainfall at different probabilistic levels of occurrence, were developed by Pizzato et al., (2012); Batistão *et al.*, (2013); Souza et al. (2013); Coan et al., (2014); Francisco *et al.*, (2015), Francisco et al. (2016); Mossini Junior et al. (2016) and Passos *et al.*, (2017). These studies consolidate each of the methodologies as accepted, being proved by an adherence test.

Theoretical probability distribution adjustments for a set of climatic elements were developed highlighting the benefits of planning activities that minimize climatic risks such as precipitation (ASSAD et al., 1991; CATALUNHA et al., 2002; ASSIS et al., 2002; ASSIS et al., 2002; ASSIS et al., 1996; BERLATO, 1987; CASTRO, 1996; BOTELHO et al., 1999).

The objective of the present work is to estimate the monthly probable rainfall at different levels of occurrence probability applying the Gamma probability distribution model for Amparo de São Francisco – Sergipe state, Brazil.

## MATERIAL AND METHODS

The Amparo de São Francisco municipality is located in a region characterized by two well-defined seasons, with a rainy period ranging from February to August and a dry period from September to January. The climate is of the “As” type (hot and humid Tropical rainy), according to the classification of Köppen (1928) and Köppen et al. (1931). Medeiros et al. (2019) and Alvares et al. (2014) also determined this classification. Amparo de São Francisco records an average temperature of 25.9 °C, 1126.8 mm precipitation, Total evaporation of 1553.0 mm, and total evaporation of 899.5 mm (FRANÇA, 2021).

Annual, monthly and daily rainfall data provided by the Superintendência do Desenvolvimento do Nordeste (SUDENE, 1990) and the Empresa de Desenvolvimento Agrícola de Sergipe (EMDAGRO - SE, 2021), between 1964 and 2019, were used, totaling 55 years with continuous observed data. The study of descriptive statistics of the observed values was carried out, concerning the mean, median, mode, standard deviation, coefficient of variation, kurtosis, asymmetry, absolute maximum and minimum, and rainfall confidence level.

Estimation of probable monthly rainfall was achieved for levels of 10, 20, 30, 40, 50, 60, 70, 75, 80, 90 and 95% probability using the probabilistic Gamma model, as described by Thom (1958), where the probabilistic density function Gamma  $f(x)$  is given by equation 1.

$$f(x) = \frac{1}{\beta^{\alpha} \Gamma(\alpha)} X^{\alpha-1} e^{-\frac{x}{\beta}} \quad 1$$

On what,

$\beta$  - scale parameter (mm);

$\alpha$  - shape parameter (dimensionless);

and - base of the neperian logarithm;

X - precipitation (mm);

$\Gamma(\alpha)$  - Gamma function.

The Gamma function  $\Gamma(\alpha)$  was calculated using equation 2.

$$\tau(\alpha) = \int_0^\alpha X^{\alpha-1} e^{-X} d(X) \quad 2$$

Finally, the Gamma  $F(x)$  cumulative distribution was determined by equation 3.

$$f(x) = \frac{1}{\beta^\alpha \tau(\alpha)} \int_0^x X^{\alpha-1} e^{-\frac{x}{\beta}} d(X) \quad 3$$

The elements of the Gamma distribution,  $\alpha$ , and  $\beta$ , were estimated by the maximum likelihood method, with the polynomial approximation for the shape parameter proposed by Greenwood and Durand (1960) apud Wilks (2006), equation 4 and/or 5.

$$\hat{\alpha} = \frac{0,5000876 + 0,1648852A - 0,0544274A^2}{A} \quad 0 \leq A \leq 0,5772; \text{ ou} \quad 4$$

$$\hat{\alpha} = \frac{8,898919 + 9,059950A + 0,9775373A^2}{17,79728A + 11,968477A^2 + A^3} \quad 0,5772 \leq A \leq 17,0. \quad 5$$

Calculating A by equation 6.

$$A = \ln \bar{X} - \frac{1}{n} \sum_{j=1}^n \ln X_j, \quad 6$$

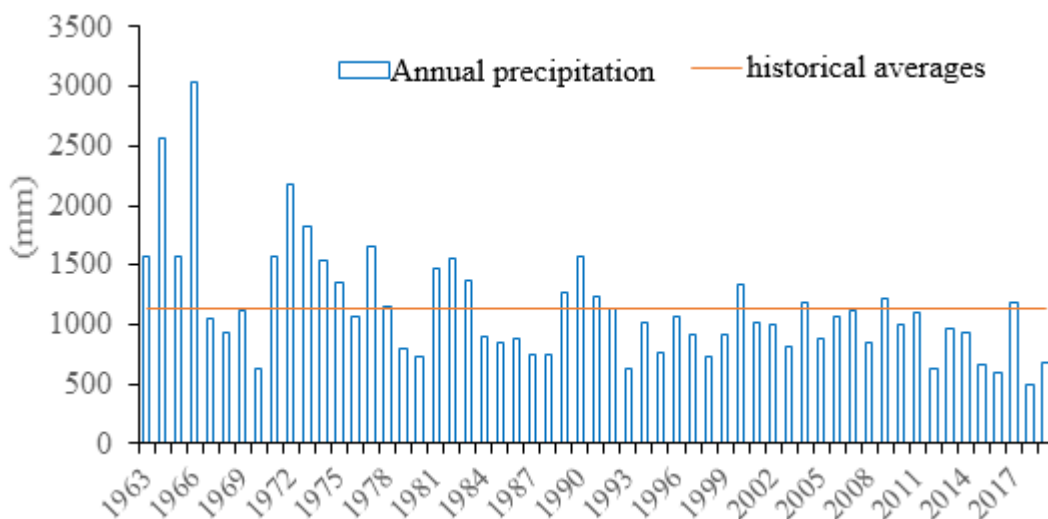
$$\hat{\beta} = \frac{\bar{X}}{\hat{\alpha}} \quad 7$$

Subsequently, it was verified through the Kolmogorov-Smirnov test at a significance level of 5%, if the adjustment was adequate by Warrick et al. (1980).

## RESULT AND DISCUSSION

Figure 1 shows the annual rainfall fluctuations and the historical average for the years 1963 to 2019 in Amparo de São Francisco – Sergipe, with an annual historical average of 1138.2 mm. High rainfall rates occurred between 1963 and 1967, and 1972, and the smallest were registered in 1970, 1980, 1993, 2012, 2016, and 2018. This variability is in accordance with the studies by Marengo et al. (2015), IPCC (2014), and Holanda et al, (2020).

Studies show that the temporal variability of rainfall is of paramount importance to quantify the consequences caused by the availability of water in the soil, surface runoff, and erosion (NADARAJAH et al., 2007; WESTRA et al., 2013).

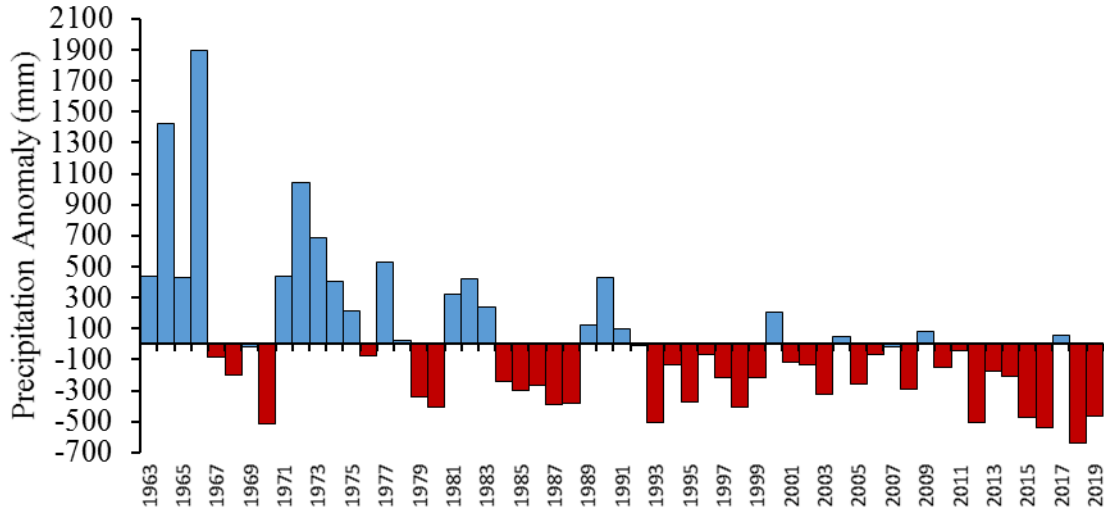


**Figure 1. Annual rainfall and historical averages for the period 1963-2019 for Amparo de São Francisco Municipality, Sergipe state, Brazil.**

**Source:** Saboya (2021).

The actions of the convective systems generated several storm nuclei with variable intensities, aided by the topography and orography at short distances, which contributed to the elevation of hot and humid air and the intensities of the instability lines. In addition, the effects of the South Atlantic cyclone vortices and penetrations the cold fronts, strengthen this system and cause moderate to heavy rains in Amparo de São Francisco (TREFALUT et al., 2018; CALDANA et al., 2018; CALDANA et al., 2019). Sobral et al. (2018) highlight that in higher áreas, rainfall concentrations are higher.

Figure 2 shows the variability of annual rainfall anomalies between 1963 and 2019 for Amparo de São Francisco – Sergipe. Variations from 1894.6 mm in 1966 to -639.4 mm in 2018 were observed. Seventeen years had rainfall above the average; nine years with rainfall close to the average and thirty years with rainfall below the climatological average. Medeiros' study (2019); Marengo et al, (2017); Xavier et al, (2005) showed similarities with the discussions and rainfall anomalies observed in this study.



**Figure 2. Annual rainfall anomalies from 1963 to 2019 in Amparo de São Francisco Municipality, Sergipe state, Brazil.**

**Source:** Saboya (2021).

Montebeller (2007) ensures that rainfall fluctuations in a certain region or area are conditioned by factors such as latitude, distance to the ocean, and orographic effects, in addition to dynamic factors, such as the movement of air masses that associated with each other, characterize the rainfall index of the region, with a maximum annual rainfall of 3032.8 mm in 1966, and monthly fluctuations flowing between 189.4 mm (May) and 27.2 mm (November). The rainy four-month period is recorded from April to July and the dry four-month period from October to January.

The mean, median, mode, standard deviation, coefficient of variation, kurtosis, asymmetry, absolute maximum and minimum rainfall confidence level in Amparo de São Francisco, from 1963 to 2019, are presented in Table 1.

In terms of practical application, the median (Md) is used to observe the distribution, fifty-fifty (50% < Md < 50%), of the data series; mainly, temporal. However, for other cases, Md is used instead of the simple arithmetic mean to represent the general behavior of the data when they present very significant extreme values. The median oscillations follow the average trends with the highest occurrences between April and July. The median would represent the future trend of precipitation. In the other months, the mode values deviate from the median and average.

**Table 1. Months, mean, median, mode, standard deviation, coefficient of variation, kurtosis, asymmetry, absolute maximum and minimum, the rainfall confidence level in Amparo de São Francisco Municipality, Sergipe State, Brazil, from 1963 to 2019.**

Months	Mean	Median	Mode	Standard Deviation	Coefficient of Variation (%)	Kurtosis	Asymmetry	Minimum	Maximum	Confidence Level (95%)
January	47,7	35,6	56,0	63,6	133,2	22,2	4,1	0,7	425,8	16,7
February	59,4	37,4	10,2	77,6	130,6	24,3	4,2	0,1	533,2	20,4
March	81,8	71,9	#N/D	63,9	78,2	4,5	1,5	1,1	355,9	16,8
April	174,2	141,9	174,0	145,5	83,6	6,4	2,1	8,5	806,1	38,3
May	189,4	174,4	#N/D	114,2	60,3	1,7	1,1	10,3	540,0	30,0
June	159,9	156,7	153,8	59,5	37,2	0,6	0,4	15,0	326,2	15,7
July	149,6	155,1	169,5	44,7	29,9	1,9	0,3	54,8	299,0	11,8
August	87,6	86,1	#N/D	40,2	45,9	2,0	0,9	12,8	229,4	10,6
September	65,0	55,2	#N/D	48,0	73,8	1,3	1,2	0,1	211,4	12,6
October	40,1	24,6	0,001	46,5	116	6,5	2,4	0,1	230,7	12,2
November	27,2	22,2	1,4	28,7	105,8	5,8	2,0	0,1	152,5	7,6
December	45,0	32,4	18,6	48,5	107,9	2,9	1,7	0,1	222,7	12,8
Annual	1138,2	993,4	#N/D	781,1	#N/D	80,1	21,9	103,2	432,9	205,4

#N/A - values not statistically determined.

**Source:** França (2022).

It is observed that from October to February there were the highest values of coefficient of variation, thus showing the heterogeneity of rainfall observed in these months over the years. The highest values were observed between October and February, so there is a greater dispersion of data in the dry period in the region.

The asymmetry and kurtosis coefficients show centered measures with little flattening asymmetry to normal. Asymmetry and kurtosis measures aim to assess the level of normality or deformation of a distribution. The kurtosis curve is of the mesokurtic type. The highest absolute values were recorded in April (806.1 mm) and May (548.0 mm). Maximum values can be explained by the formations of convective systems, which are differentiated by the smallest spatial scopes, formed by the process of transference of conduction heat that occurs in intense vertical movements, leading to a rapid process of condensation and the formation of Cumulonimbus (CB) (Caldana et



al., 2018; Caldana et al., 2019a). In these cases, rainfall is generally of short duration and high intensity, and as a consequence, rainfall variability is observed (TREFAULT et al., 2018).

The minimum values occurred with fluctuations between 0.1 mm in February, and September to December, to 54.8 mm (August), with an annual minimum of 103.2 mm; maximum annual value of 423.9 mm, oscillations ranging from 152.5 mm (November) to 806.1 mm (April). Studies such as that by Marengo et al. (2008), Marengo et al. (2015), IPCC (2007), IPCC (2011), and IPCC (2015), corroborate the observed results.

Probable monthly rainfall totals associated with probability occurrence levels of 10, 20, 30, 40, 50, 60, 70, 75, 80, 90, and 95% are shown in Table 2. These levels represent the occurrence of expected rainfall above these values.

The Kolmogorov-Smirnov test was applied to both grouped and individual data. Catalonia et al. (2002) showed that in the grouped data there is no restriction on the number or value of classes. It is based on the modulus of the greatest difference between the observed and estimated probability, which is compared with a tabulated value, according to the number of observations in the series, under test. This avoids the cumulative aspect of errors (VIEIRA et al., 2010).

**Table 2. Probable monthly precipitation for Amparo de São Francisco, Sergipe state, Brazil, with different levels of probability, per the Gamma distribution function, for the period 1963 to 2019.**

Months	Probability levels (%)										
	10	20	30	40	50	60	70	75	80	90	95
January	4,3	9,6	15,8	23,1	23,1	42,9	57,1	66,2	77,3	112,2	147,2
February	3,3	8,7	15,8	24,6	24,6	50,2	69,4	81,9	97,4	147,0	197,8
March	12,3	23,1	34,5	46,9	46,9	78,1	99,5	112,9	129,1	178,5	227,1
April	70,5	95,1	116,3	136,7	157,9	181,2	208,5	224,8	243,8	298,8	349,7
May	59,4	87,1	112,2	137,3	137,3	194,0	229,9	251,6	277,2	352,5	423,6
June	84,2	104,2	120,5	135,8	135,8	167,7	186,6	197,7	210,5	246,9	279,7
July	93,5	109,4	121,9	133,4	133,4	156,8	170,3	178,1	187,1	212,1	234,3
August	40,2	52,0	61,9	71,4	71,4	91,6	103,8	111,0	119,4	143,4	165,5
September	12,0	21,1	30,1	39,9	39,9	63,5	79,4	89,2	101,1	136,9	171,7
October	2,5	6,4	11,2	17,3	17,3	34,4	47,2	55,4	65,6	98,1	131,2
November	1,5	4,0	7,2	11,3	11,3	22,9	31,7	37,4	44,5	67,2	90,5
December	2,2	6,0	11,2	17,8	26,3	37,2	52,1	61,8	73,9	112,7	152,7

**Source:** França (2022).

The effective rainfall values at a probability level of 95% can be applied in irrigation projects, where the crop is more sensitive to water stress, or in those with greater economic value. The study area with a level of 95% and rainfall greater than 100 mm, were recorded in January, February, August, September, October, and December; rainfall, greater than 200 mm, were registered in March, June, and July. Rainfall rates above 400 mm would occur in April and May. For other cultures, the probability level of 75% can be used, as indicated by Doorembos et al. (1977), Silva et al. (1988), and Bernardo (1989). The months of March, June, July, August were greater than 100 mm; greater than 200 mm were registered in April and May.

In June and July, values greater than 100 mm were registered for the 20% probability levels. At the 30% level, there would be rain above 100 mm from May to July. For levels of 40%, 50%, and 60%, rainfall above 100 mm predominated from April to July. At the 70% level, the months of June, July, and August would be greater than 100 mm, and the months of April and May would predominate with rainfall above 200 mm. At the 80% level, rainfall fluctuations would range between 44.5 and 277.2 mm. At the 90% level, the months of October and November would be less than 100 mm. With this framework, it is possible to propose mitigating actions for the impacts of drought, such as the construction of dams, use of irrigation, adjustment of planting date, seeking to maximize water use.

Passos et al. (2017) found that in Chapadinha – MA, Brail, in January, February, March, April, May, August, and October, the average flowed between levels of 40% to 50% probability, and in June, July, November, and December the average was reduced between 30% and 40%.

Table 3 shows the alpha ( $\alpha$ ) and beta ( $\beta$ ) adjustment coefficients of the Gamma distribution for rainfall data and the values of the Kolmogorov-Smirnov (Ks) test at 5% probability for the municipality of Amparo de São Francisco from 1963 to 2019.

Table 3. Coefficients of adjustment of the Gamma function and the values of the Kolmogorov-Smirnov test (Ks) at 5% probability for Amparo de São Francisco - SE.

Months	Gama		Ks Test at 5%	
	Alfa ( $\alpha$ )	Beta ( $\beta$ )	Observed	Critical
January	0,92	51,86	0,102	0,179
February	0,74	79,87	0,062	
March	1,24	65,85	0,126	
April	3,51	49,64	0,119	
May	2,42	78,35	0,116	
June	6,04	26,48	0,098	
July	10,15	14,74	0,122	
August	4,41	19,84	0,053	
September	1,44	45,15	0,067	
October	0,78	51,33	0,022	
November	0,74	36,54	0,088	
December	0,70	63,85	0,052	

Source: França (2022).

The oscillations of the Alpha parameter ( $\alpha$ ) flow from 0.70 (December) to 10.15 (July). According to Botelho et al. (1999), the variation of  $\alpha$  is related to the asymmetry of the months, with the asymmetry being inversely proportional to  $\alpha$ . The Beta parameter ( $\beta$ ) ranged from 14.74 (July) to 79.87 (February). The highest monthly index  $\beta$  was registered in February, a month that presented rainfall of 59.4 mm, and a Standard Deviation, 77.6 mm, is an identifier of the variability of the data. It appears that the Gamma probability distribution was adequate to estimate monthly rainfall for the studied area.

### CONCLUSIONS

The probabilistic Gamma model was adapted to the monthly rainfall data of the studied area.

The rainfall distribution registered an average annual temporal variability of 1138.2 mm, for an annual maximum of 3302.8 mm in 1966 and an annual minimum of 498.8 mm.

Analysis of rainfall data at the 70% level, 80%, and 90% probabilities distinguish the months April, May, and June with rainfall above 200 mm.

For the probability level of 75%, the annual totals of the most significant effective precipitation were registered in March to August, with oscillations from 111.0 mm to 251.6 mm.

For 95% of the precipitation probability level, the only month that has rainfall below 100 mm is November.

## REFERENCES

- 1.Alvares, C.; Stape, J.; Sentelhas, P.C.; Gonçalves, J Sparovek, G.; Köppen's climate classification map for Brazil. *Meteorolog is cheZeitschrift*, v. 22, p. 711–728. 2014.
- 2.Araújo, W.F.; Júnior, A.S.A.; Medeiros, R.D.; Sampaio, R. Probable monthly rainfall in Boa Vista, State of Roraima, Brazil. *Brazilian Journal of Agricultural and Environmental Engineering*, Campina Grande, v.5, n.3, p.563-567, 2001.
- 3.Assad, E.D.; Castro, L.H.R. Frequency analysis of rainfall for the Sete Lagoas station, MG. *Brazilian Agricultural Research*, v.26, p.397-402, 1991.
- 4.Assis, F.N. Modeling of occurrence and amount of rain and dry days in Piracicaba - SP and Pelotas-RS. 1991. 134 f. Thesis (Doctorate in Agronomy). Luiz de Queiroz College of Agriculture, Piracicaba, 1991.
- 5.Assis, F.N.; Arruda, H.V.; Pereira, A.R. Applications of statistics to climatology: theory and practice. Pellets: UFPel, 1996. 161p.
- 6.Batistão, A.C.; Lavezo, A.; Pessoa, M.J.G.; Dellacort, R.; Carvalho, M.A.C. Temporal distribution and probability of rain occurrence in the municipality of Juína (MT). *Brazilian Journal of Climatology*, v.13, n.9, p.258-270, 2013.
- 7.Berlato, M.A. Model of the relationship between soybean grain yield and water deficit for the State of Rio Grande do Sul. 1987. 93 f. Thesis (Doctorate). National Institute for Space Research, São José dos Campos, 1987.
- 8.Bernardo, S. Irrigation manual. 5th Ed. Viçosa, UFV. University Press. 1989. 586p.
- 9.Botelho, V.A.; Morais, A.R. Estimates of the parameters of the gamma distribution of rainfall data from the Municipality of Lavras, State of Minas Gerais. *Science and Agrotechnology*, v. 23, p. 697-706, 1999.
- 10.Castro, R. Probabilistic precipitation distribution in the Botucatu-SP region. 1996. 88 f. Dissertation (Masters in Agronomy). São Paulo State University, Botucatu, 1996.
- 11.Catalunha, M.J. Evaluation of five probability density functions for rainfall series in the state of Minas Gerais. 72f. Thesis (Doctorate in Agricultural Meteorology). Federal University of Viçosa. Viçosa, 2000.
- 12.Catalunha, M.J.; Sediayama, G.C.; Leal, B.G.; Soares, C.P.; Ribeiro, A.B. Application of five probability density functions to rainfall series in the State of Minas Gerais. *Brazilian Journal of Agrometeorology*, v.10, n.1, p.153-162, 2002.
- 13.Caldana, N.F.S. et al. Occurrences of Floods, Runoffs and Floods and the Pluviometric Variability in the Iguaçú River Basin. *Brazilian Journal of Climatology*, vol. 23, p. 343-355, 2018.
- 14.Caldana, N.F.S. et al. Genesis, Impact and Variability of Hail Precipitation in the Mid-Southern Mesoregion of Paraná, Brazil. *Geography Notebook*, v. 29, p. 61-80, 2019.
- 15.Caldana, N.F.D.S.; Nitsche, P.R.; Martelócio, A.C.; Rudke, A.P.; Zaro, G.C. Batista Ferreira, L.G., Martins, J.A. Agroclimatic Risk Zoning of Avocado (American Persea) in the Hydrographic Basin of Paraná River III, Brazil. *Agriculture*, v. 9, n. 263, p. 1-11, 2019a.
- 16.Carvalho, J.R.P.; Vieira, S.R.; Grego, C.R. (2009). Comparison of methods for fitting semivariogram models of annual rainfall. *Brazilian Journal of Agricultural and Environmental Engineering*, Campina Grande. 13(4), 443-448.

- 17.Coan, B.P.; Back, A.J.; Bonetti, A.V. Probable monthly and annual precipitation in the State of Santa Catarina. *Brazilian Journal of Climatology*, v.15, n.10, p.122-142, 2014.
- 18.Doorenbos, J.; Prutt, W.O. Guidelines for predicting crop water requirements. Rome: FAO, Irrigation and Drainage Paper 24. 1977. 144p.
- 19.França, M.V. Climatology of the municipality of Amparo de São Francisco (SE) between 1963-2019. *Revista Mirante, Anápolis (GO)*, vol. 14, no. 1, p.36-55. Jun. 2021. ISSN 1981-4089
- 20.Francisco, P.R.M., Medeiros, R.M., Santos, D. Rainfall fluctuations among the differentiated rainfall regimes in the state of Paraíba. *Brazilian journal of irrigated agriculture*, v.9, n.6, p.360-371, 2015.
- 21.Francisco, P.R.M.; Mello, V.S.; Medeiros, R.M.; Bandeira, M.M.; Macedo, F.L.; Santos, D. Discrimination of rainfall scenarios in the state of Paraíba using Incomplete Gamma distribution and Kolmogorov-Smirnov test. *Brazilian Journal of Physical Geography*, v.9, n.1, p.47-61, 2016.
- 22.Hartmann, M.; Moala, F.A.; Mendonça, M.A. Study of maximum annual rainfall in Presidente Prudente. *Brazilian Journal of Meteorology*, v.26, p.561-568, 2011. <http://dx.doi.org/10.1590/S0102-77862011000400006>
- 23.Kite, G.W. Frequency and risk analysis in hydrology, Water resources publications for Collins. V3. 1978, 395p.
- 24.Köppen, W. (1931). *Grundriss der Klimakunde: Outline of climate science*. Berlin: Walter de Gruyter, P.388.
- 25.Köppen, W.; Geiger, R. (1928). *Klimate der Erde*. Gotha: Conditioned Verlag. Justus Perthes. n.p. 1928.
- 26.Lima, J.S.S.; Silva, S.A.; Oliveira, R.B.; Cecílio, R.A.; Xavier, A.C. Temporal variability of monthly precipitation in Alegre-ES. *Revista Ciência Agronômica*, vol. 39, no. 2, p. 327-332, 2008.
- 27.Louzada, J.A.; Lanna, A.E.; Beltrame, L.F.; Cotrin, S.L.; Vezzini, F.M. Comparison between daily and monthly water balance models to estimate the need for irrigation. In: *Brazilian Congress on Irrigation and Drainage*, 9. Anais... Salvador. Brasília: ABID. 1991. p1601-1620.
- 28.Montebeller, C.A.; Ceddia, M.B.; Carvalho, D.F.; Vieira, S.R.; Franco, E.M. Spatial variability of the erosive potential of rainfall in the State of Rio de Janeiro. *Agricultural Engineering, Jaboticabal*, v.27, n.2, p.426-435, 2007.
- 29.Mossini Junior, D.; Ramos, H.C.; Dallacort, R.; Silva, F.S. precipitation distribution and probability for Nova Mutum, Mato Grosso, Brazil. *Encyclopedia Biosphere*, v.13, n.24, p.435-447, 2016.
- 30.Naghattini, M.; Pinto, E.J.A. *Statistical hydrology*, 1st ed, Belo Horizonte: CPRM, 2007, 552p.
31. Saboya, L.M.F.; Medeiros, R.M.; Holanda, R.M.; França, M.V.; Rolim Neto, F.C.; Araújo, W.R. Precipitation probabilities with use of the Gamma Distribution for the municipality of Barbalha-Ce, Brazil. *Ijstrm.Human*, 2021; Vol. 19 (2): 122-134.
- 32.Steps, M.L.V.; Mendes, T.J. Probable monthly and annual rainfall for the municipality of Turiaçu-MA. *Brazilian Journal of Irrigated Agriculture*, vol. 12, no. 1, p. 2283-2292, 2018.
- 33.Steps, M.L.V.; Raposo, A.B.; Mendes, T.J. Estimate of the distribution of probable rainfall at different levels of probability of occurrence. *Brazilian Journal of Irrigated Agriculture*, vol. 11, no. 1, p. 1106 - 1115, 2017.
- 34.Pizzato, J.A.; Dallacort, R.; Tieppo, R.C.; Modolo, A.J.; Cremon, C.; Moreira, P.S.P. distribution and probability of precipitation occurrence in Cáceres (MT). *Research Agropec. Trop., Goiânia*, v.42, n.2, p.137-142, 2012.
- 35.Sanchez, S.N. Concepts of effective rain and its application in irrigation programming. Technical Memorandum No. 307. Secretariat of Water Resources. Mexico. 102p. 1972.
- 36.Silva, W.L.C.; Oliveira, C.A.S.; Morquelli, W.A. Subsidies for dimensioning irrigation systems. In: *National Congress on Irrigation and Drainage*, 8. ABID. Florianópolis, SC, 1988. v.1, p.535-553.
- 37.Silva, J.C.; Heldwein, A.B.; Martins, F.B.; Trentin, G.; Grimm, E.L. Rainfall distribution analysis for Santa Maria, RS. *Brazilian Journal of Agricultural and Environmental Engineering*, v. 11, no. 1, p. 67-72, 2007.
- 38.Sobral et al. Spatiotemporal and interannual variability of rainfall in the state of Rio de Janeiro. *Brazilian Journal of Climatology*, vol. 22, 2018.
- 39.Souza, J.L.M., Jerszurki, D., Damazio, E.C. Functional relationships between probable and average precipitation in Brazilian regions and climates. *Research agricultural bras., Brasília*, v.48, n.7, p.693-702, 2013.
- 40.SUDENE (nineteen ninety). Northeast Development Superintendence. Monthly rainfall data for the Northeast – Sergipe. *Pluviometry Series*, 2. Reef
- 41.Thom, H.C.S. A note on the Gamma Distribution. *Monthly Weather Review*, Washington, v.86, n.4, p.117-22, 1958.

42. Trefault, S. et al. A Severe Hail Storm in Complex Topography in Switzerland Observations And Processes. Atmospheric Research, vol. 209, p. 76-94, 2018.
43. Vieira, J.P.G.; Souza, M.J.H.; Teixeira, J.M.; Oak, F.P. Study of monthly precipitation during the rainy season in Diamantina, Minas Gerais. Brazilian Journal of Agricultural and Environmental Engineering, v.14, n.7, 2010.
44. Warrick, A.W.; Nielsen, D.R. Spatial variability of soil physical properties in the field. In: Hillel, D. (ed.). Applications of soil physics. New York, Academic Press, 1980. 350p.
45. Wilks, Daniel S. Statistical Methods in the Atmospheric Sciences, 2nd ed. Department of Earth and Atmospheric Sciences, Cornell University, 2006, Elsevier Inc., 649p.

<i>Image</i>	<b>Raimundo Mainar de Medeiros – Corresponding Author</b>
<i>Author -1</i>	<i>Universidade Federal Rural de Pernambuco</i>
<i>Image</i>	<b>Manoel Viera de França</b>
<i>Author -2</i>	<i>Universidade Federal Rural de Pernambuco</i>
<i>Image</i>	<b>Luciano Marcelo Fallé Saboya</b>
<i>Author -3</i>	<i>Universidade Federal de Cmpina Grande</i>
<i>Image</i>	<b>Romildo Morant de Holanda</b>
<i>Author -4</i>	<i>Universidade Federal Rural de Pernambuco</i>
<i>Image</i>	<b>Francisco de Assis Salviano de Sousa</b>
<i>Author -5</i>	<i>Universidade Federal de Cmpina Grande</i>
<i>Image</i>	<b>Fernando Cartaxo Rolin Neto</b>
<i>Author -5</i>	<i>Universidade Federal Rural de Pernambuco</i>